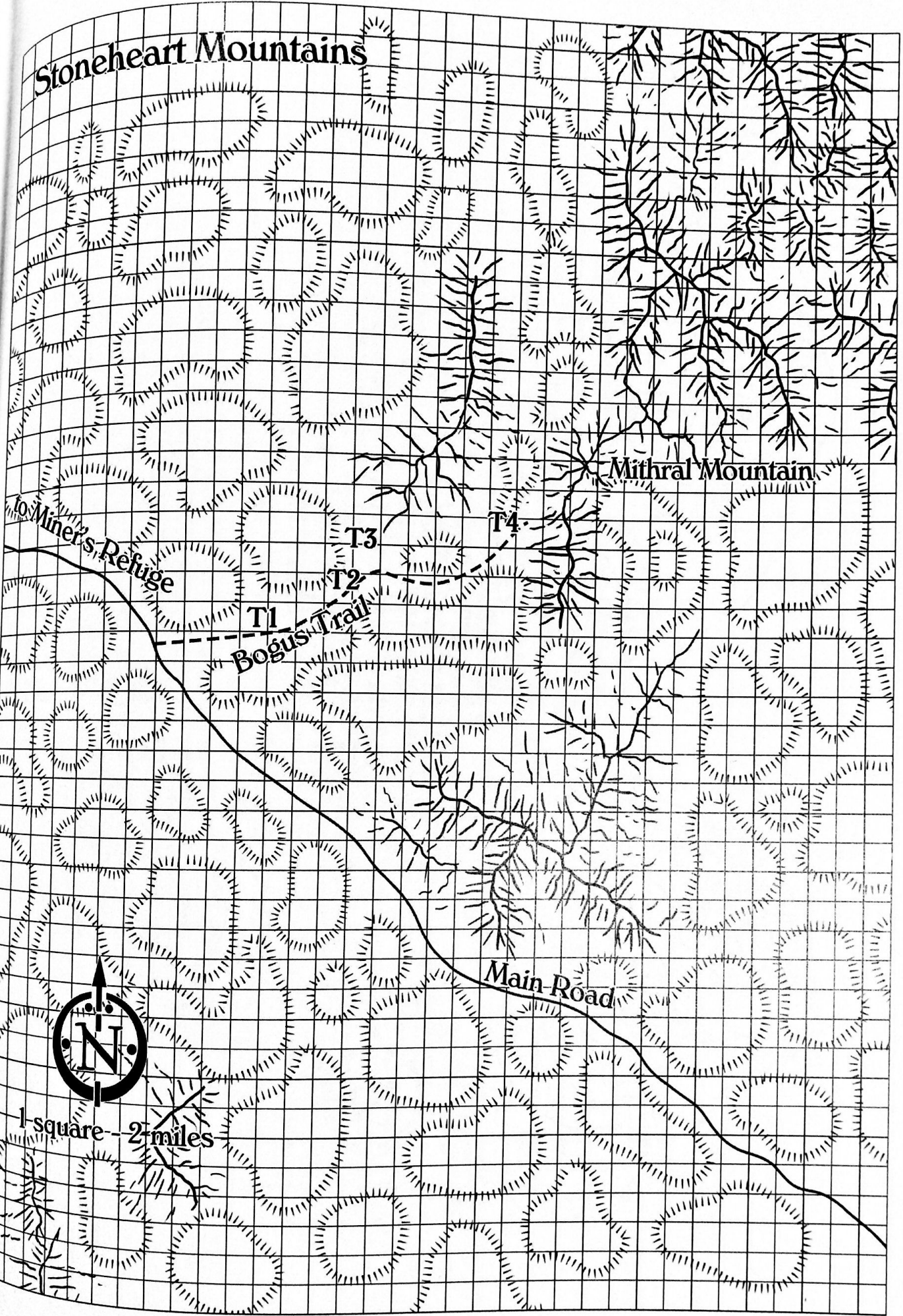
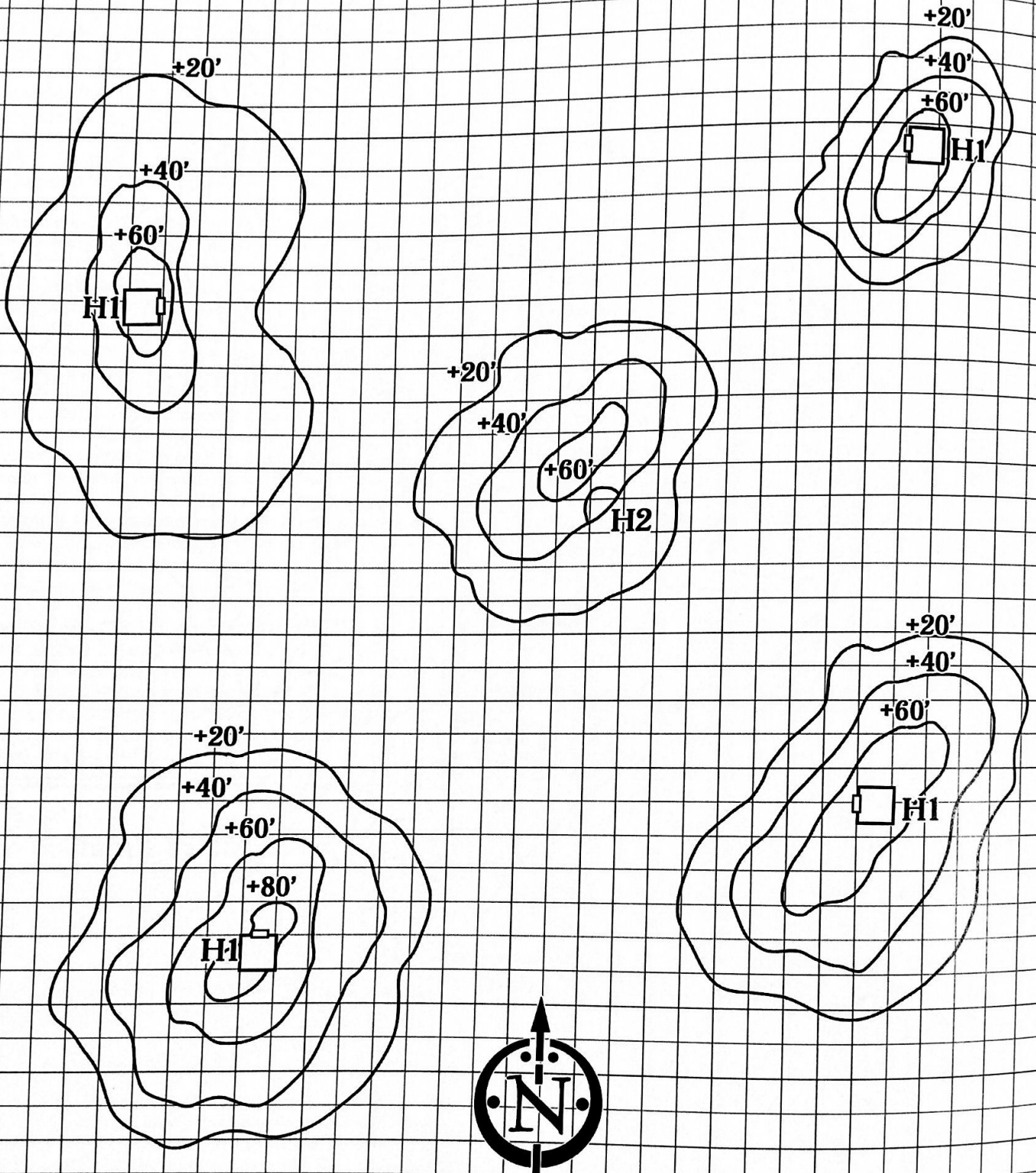


# Stoneheart Mountains



# Hobgoblin Lair

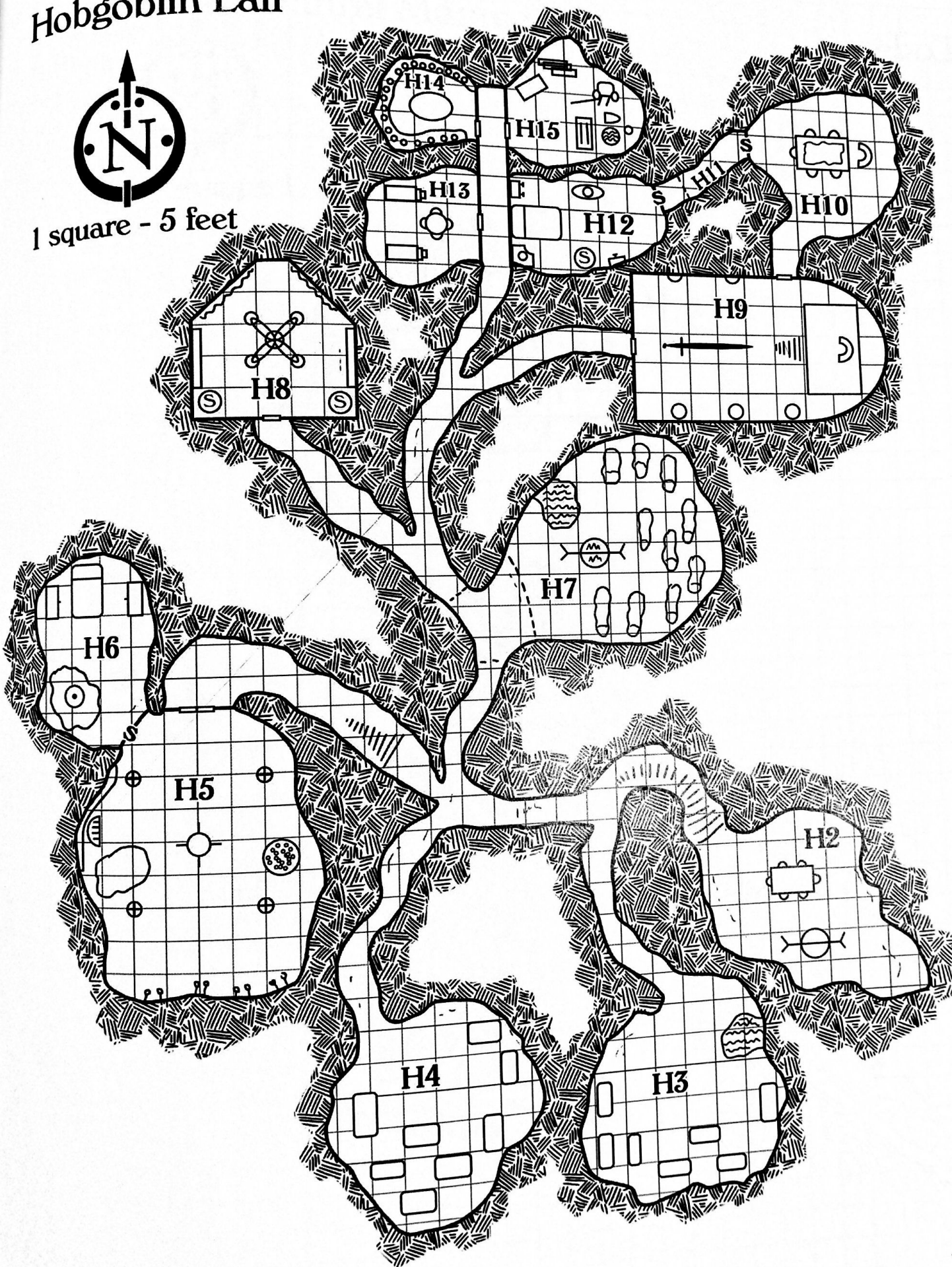


1 square - 10 yards

# Hobgoblin Lair



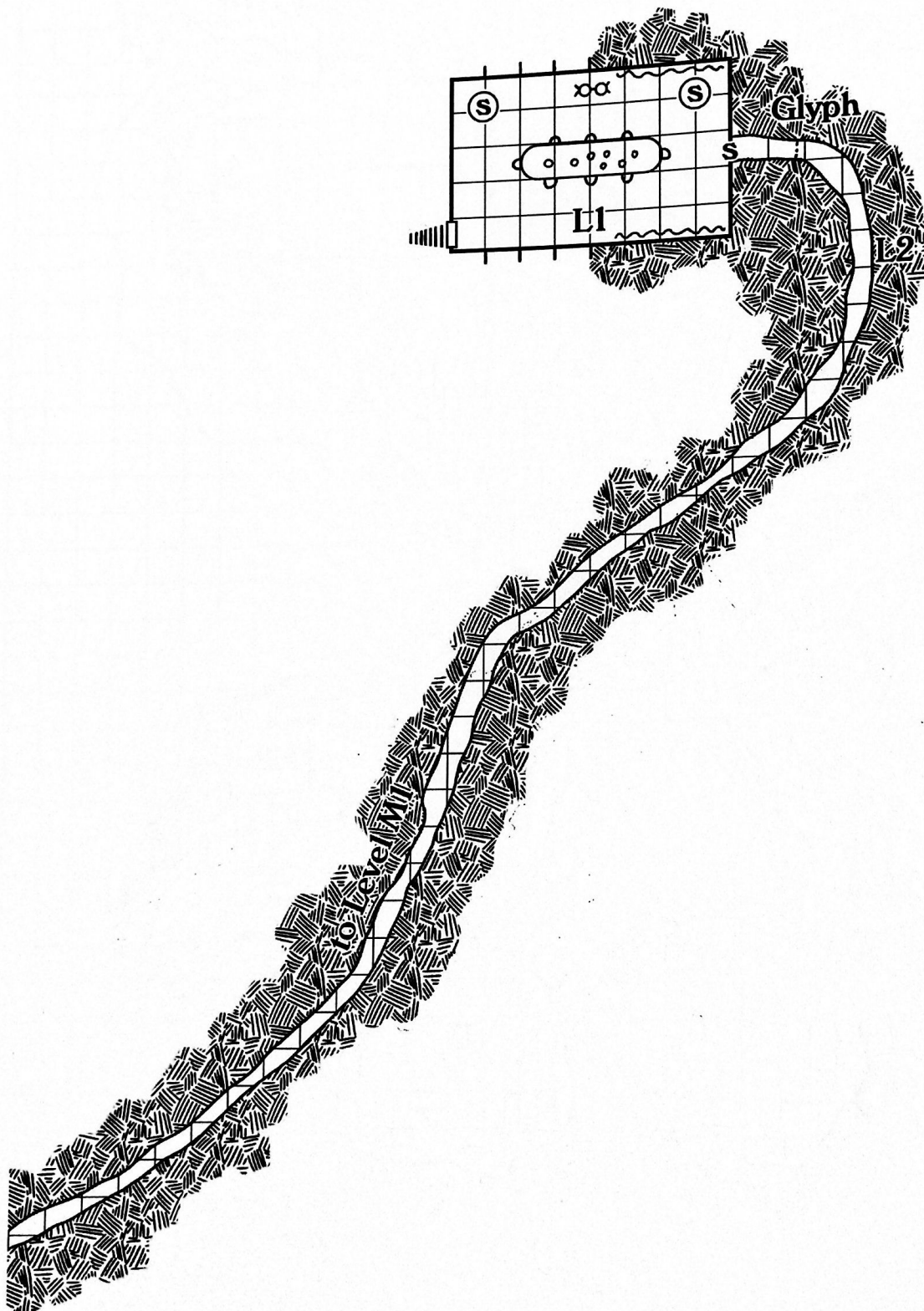
1 square - 5 feet



Lodge



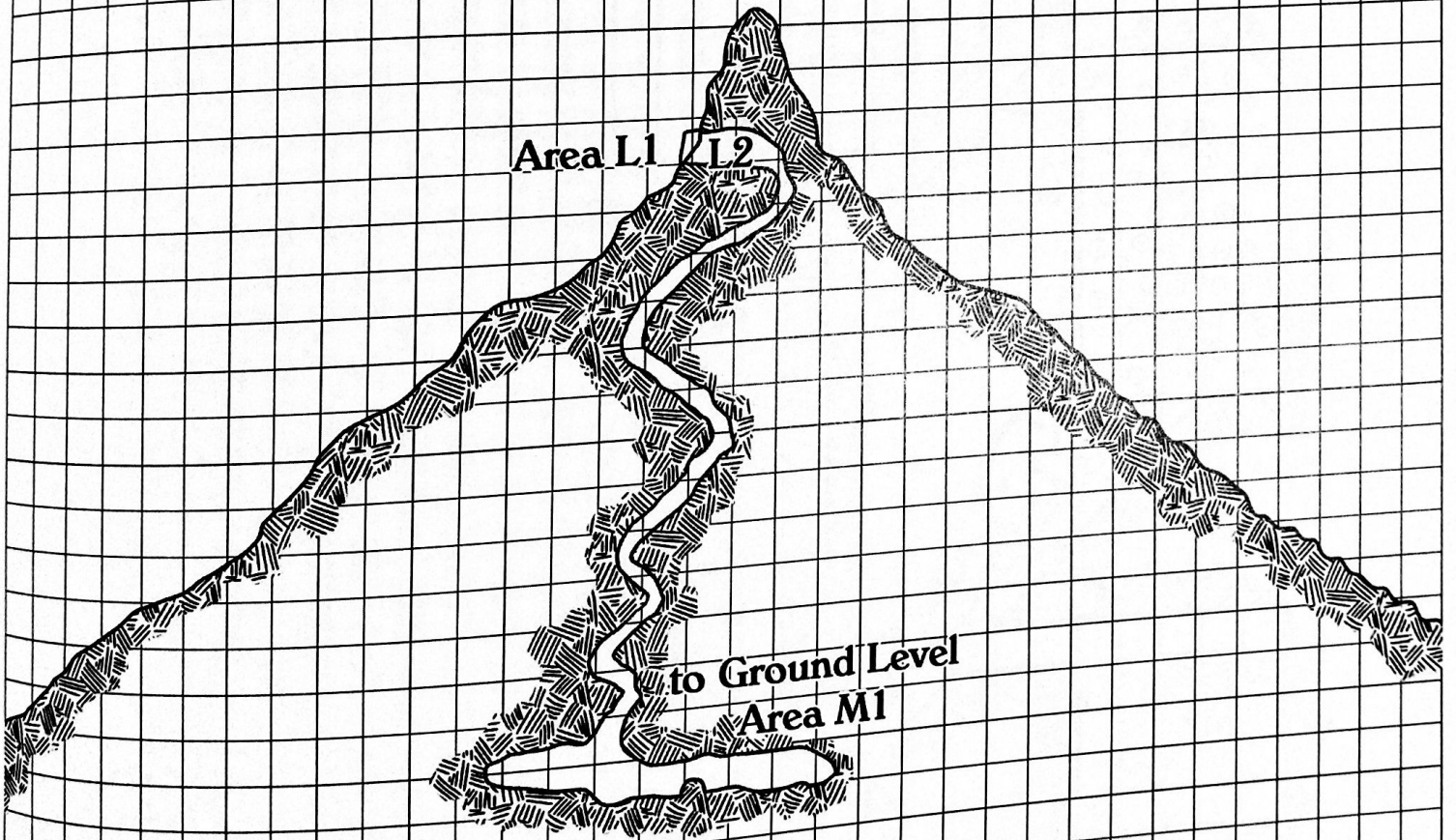
1 square - 5 feet



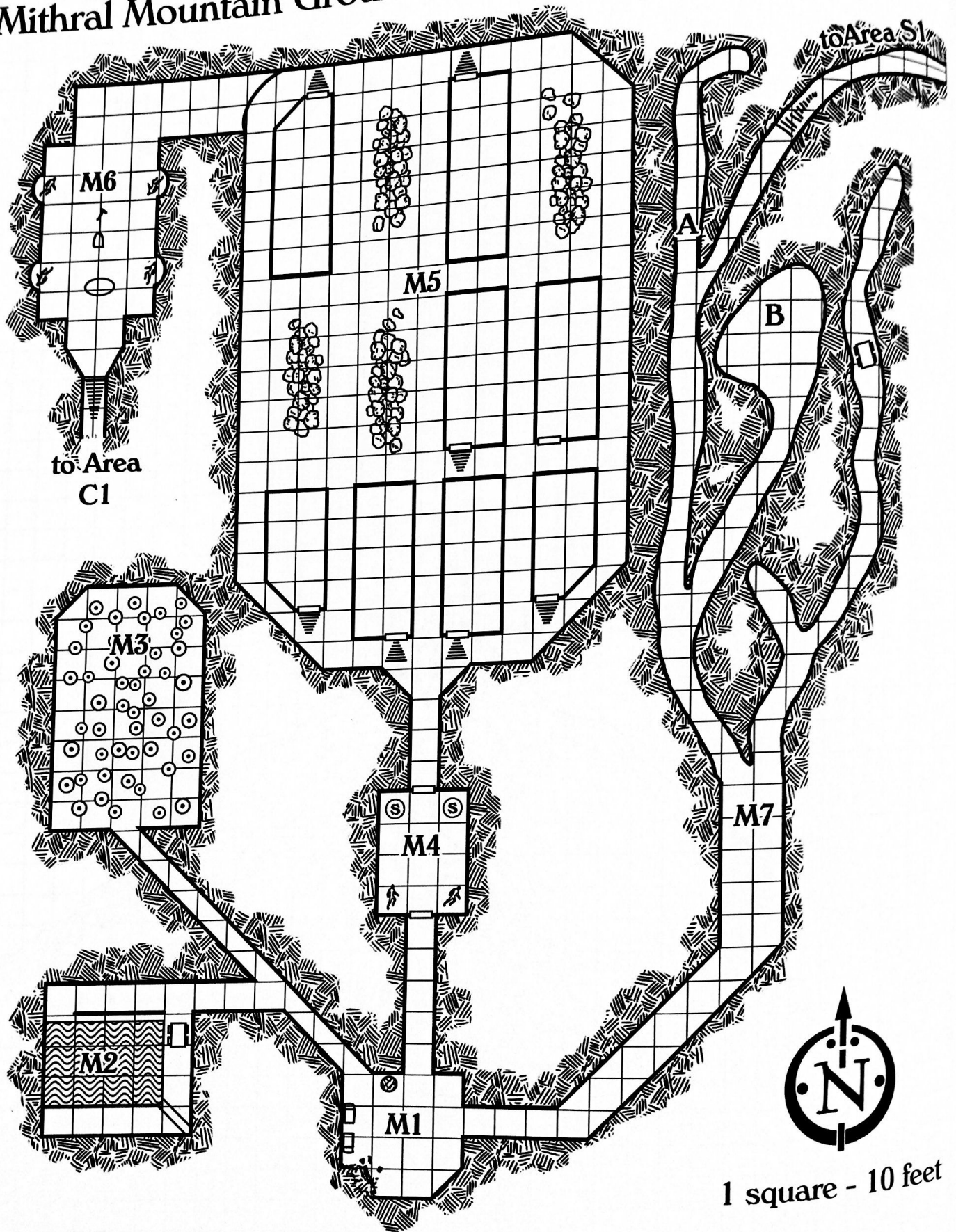
# Side View of Mithral Mountain



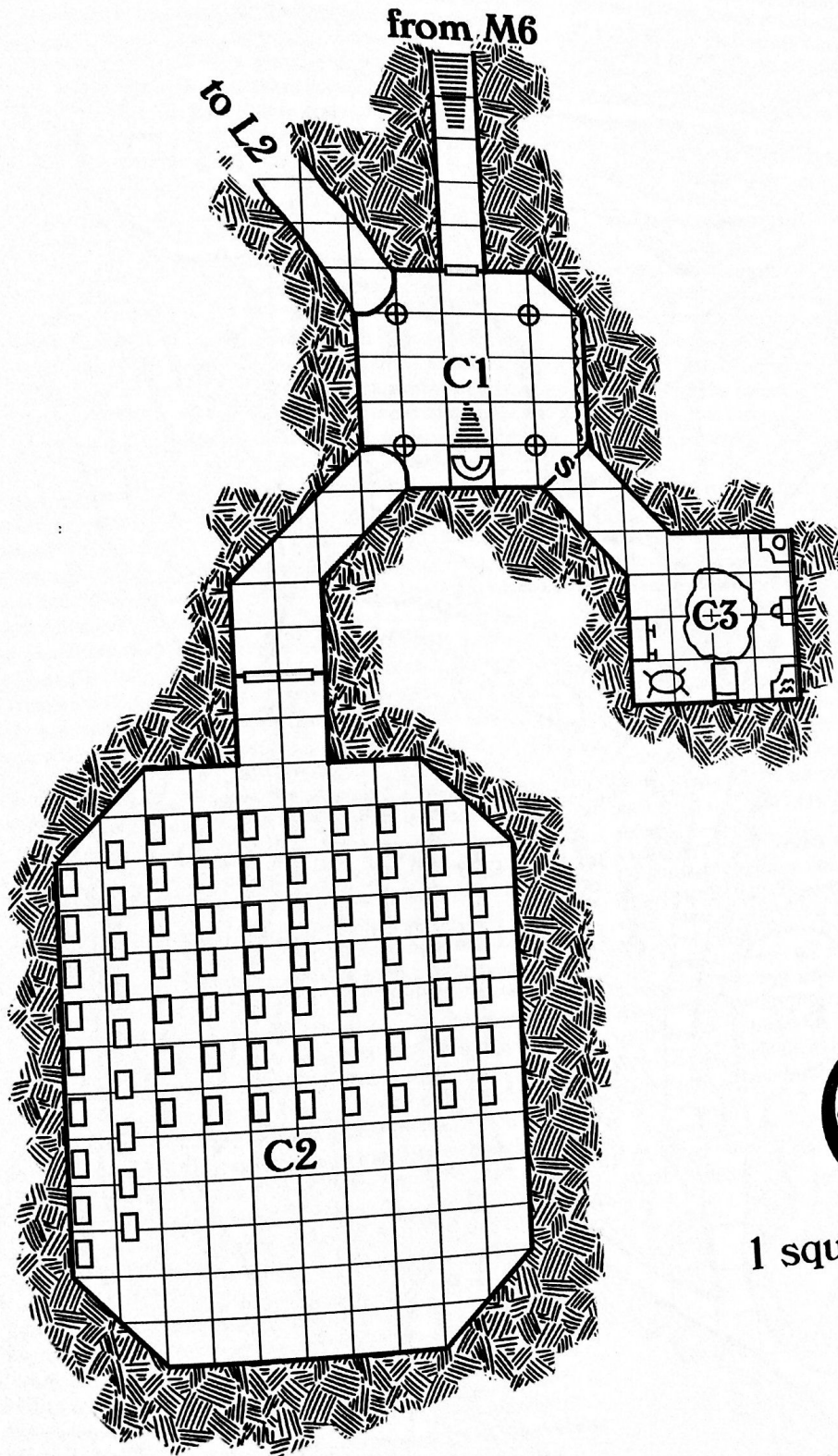
1 square - 200 feet



QUESTIONS  
Mithral Mountain Ground Level

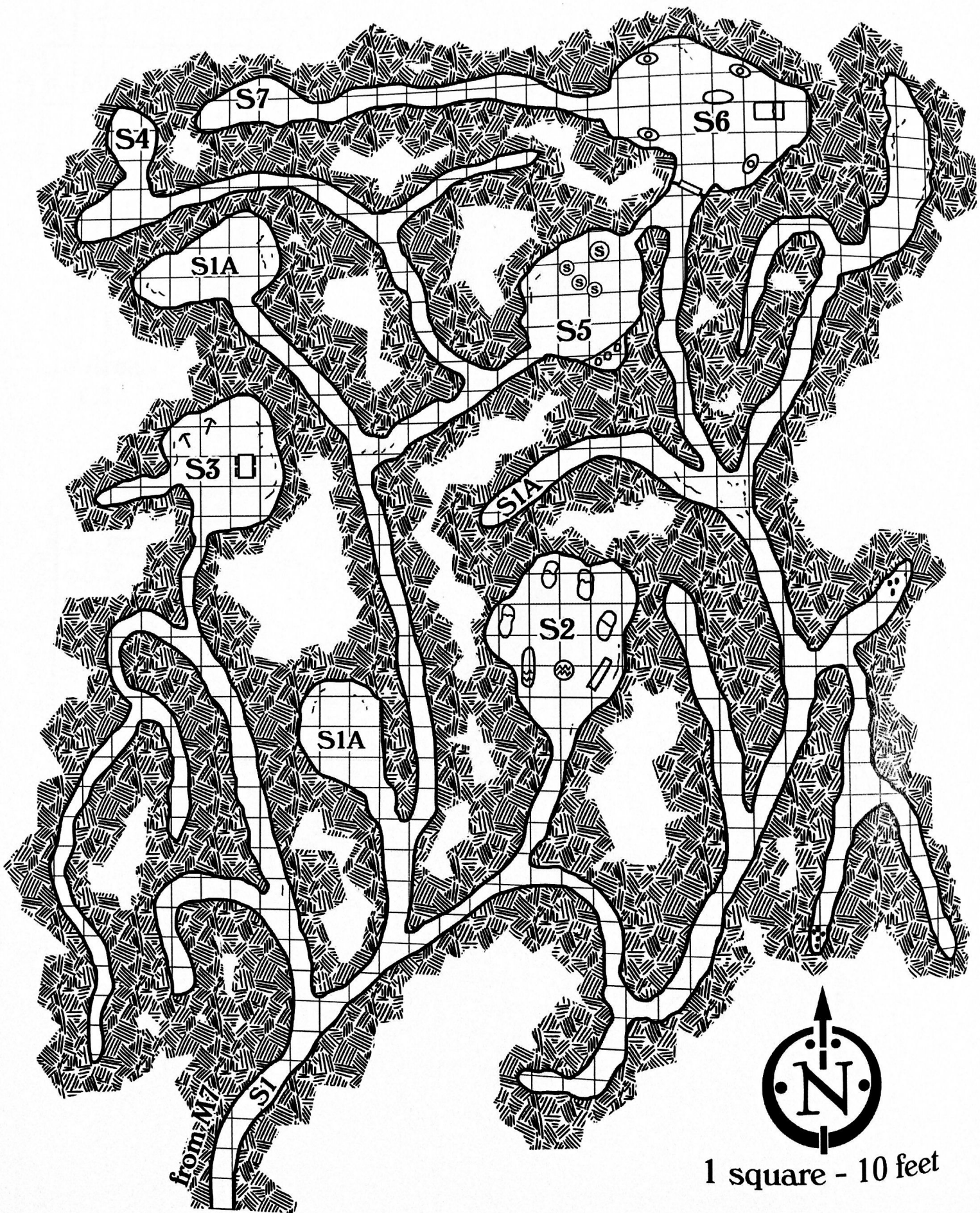


# Catacombs Level



1 square - 10 feet

# Sanctum Level



1 square - 10 feet